



GMT MONTHLY MEMBERSHIP PROGRESS REPORT

Results as of: 6/30/2017

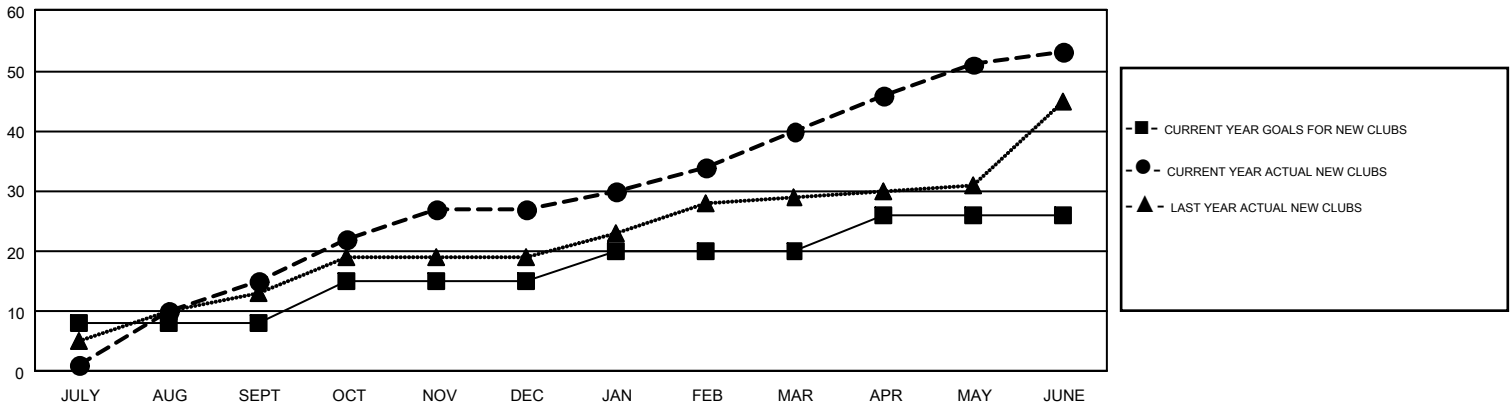
GMT Constitutional Area 7, Group C

GMT: JUSWAN TJOE

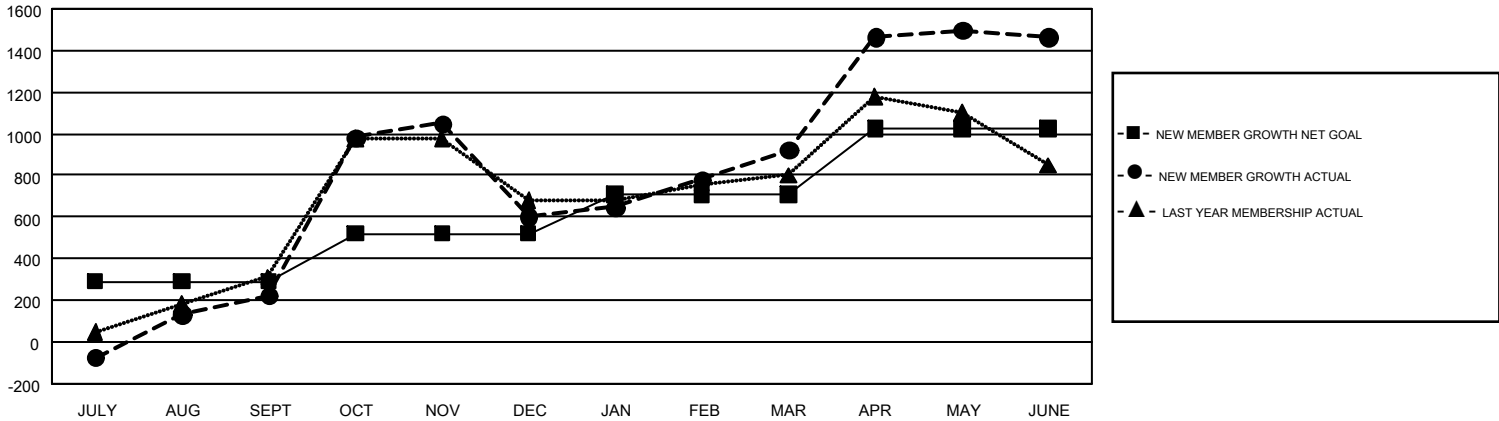
REPORT DOES NOT INCLUDE CLUBS IN UNDISTRICTED AREAS.

Clubs				Members			
RESULTS FOR 2016-2017				RESULTS FOR 2016-2017			
QUARTER	NEW CLUB GOAL	NEW CLUBS	DROPPED CLUBS	QUARTER	NEW MEMBER GROWTH NET GOAL (not reinstated or transfers)	NEW MEMBER GROWTH ACTUAL (not reinstated or transfers)	DROPPED MEMBERS ACTUAL (including transfers)
JULY/AUG/SEPT	8	15	4	JULY/AUG/SEPT	290	641	419
OCT/NOV/DEC	7	12	10	OCT/NOV/DEC	230	1,070	691
JAN/FEB/MAR	5	13	1	JAN/FEB/MAR	190	489	168
APR/MAY/JUNE	6	13	2	APR/MAY/JUNE	315	1,644	1,102

GOALS AND ACTUAL NEW CLUBS CUMULATIVE



GOALS AND ACTUAL MEMBERS CUMULATIVE



DROPPED CLUBS: 17	270 CLUBS OF 346 ADDED 1 OR MORE NEW MEMBERS	GENDER DISTRIBUTION MALE 4,533 (45.87%) FEMALE 5,350 (54.13%)
DROPPED MEMBERS DECEASED 29 CLUB CANCELLED 159 OTHER 2,191 TOTAL 2,379	CLICK HERE FOR CUMULATIVE MEMBERSHIP DATA	TOTAL FAMILY UNIT MEMBERS 2,160 FAMILY MEMBERS PAYING HALF DUES 1,182